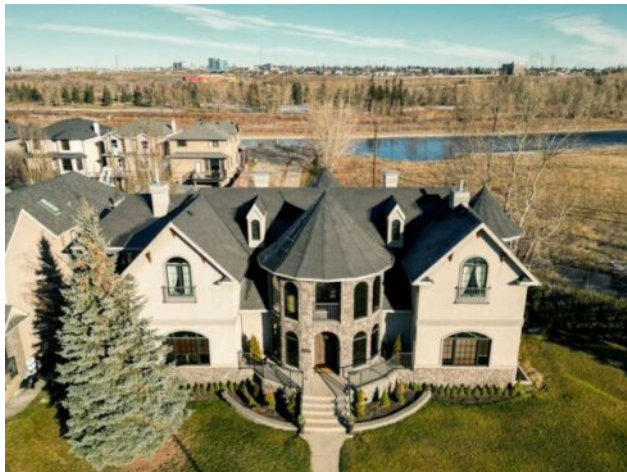


2248 9 Avenue SE  
Calgary, Alberta

MLS # A2192031



**\$3,090,000**

|                  |  |               |                   |
|------------------|--|---------------|-------------------|
| <b>Division:</b> | Inglewood  |               |                   |
| <b>Type:</b>     | Residential/House  |               |                   |
| <b>Style:</b>    | 2 Storey   |               |                   |
| <b>Size:</b>     | 4,973 sq.ft.   | <b>Age:</b>   | 2006 (19 yrs old) |
| <b>Beds:</b>     | 4  | <b>Baths:</b> | 4 full / 1 half   |
| <b>Garage:</b>   | Double Garage Detached   |               |                   |
| <b>Lot Size:</b> | 0.26 Acre  |               |                   |
| <b>Lot Feat:</b> | Back Lane, Backs on to Park/Green Space, Conservation, Corner Lot, Environ |               |                   |

|                    |   |                   |      |
|--------------------|---|-------------------|------|
| <b>Heating:</b>    | Forced Air, Natural Gas   | <b>Water:</b>     | -    |
| <b>Floors:</b>     | Carpet, Ceramic Tile, Hardwood  | <b>Sewer:</b>     | -    |
| <b>Roof:</b>       | Asphalt Shingle   | <b>Condo Fee:</b> | -    |
| <b>Basement:</b>   | Finished, Full  | <b>LLD:</b>       | -    |
| <b>Exterior:</b>   | Stone, Stucco, Wood Frame   | <b>Zoning:</b>    | M-CG |
| <b>Foundation:</b> | Poured Concrete   | <b>Utilities:</b> | -    |
| <b>Features:</b>   | Bar, Bookcases, Breakfast Bar, Built-in Features, Ceiling Fan(s), Closet Organizers, Crown Molding, Double Vanity, Granite Counters, High Ceilings, Kitchen Island, Pantry, Smart Home, Storage, Sump Pump(s), Walk-In Closet(s), Wired for Sound |                   |      |

**Inclusions:** Pool Table, ALL TV's & Mounts, Sound System & Receiver, Theatre Room (projector, screen, chairs), Gym Equipment, Storage Shelving in basement, Fire Table on deck.

Discover Your Own "Castle in the City"! Welcome to a stunning 7,000+ SF custom residence originally inspired by the iconic Banff Springs Hotel. Perfectly situated on a spacious 11,000sf double lot (zoned M-CG) at the very end of 9 Avenue SE and surrounded by nothing except the serene Bow River, the picturesque Inglewood wildlands & bird sanctuary, lush parks, and scenic walking/riding trails. This private and exclusive location is one of a kind! As you approach this magnificent estate, you'll be captivated by the exquisite stone and woodwork that grace both the exterior and interior, showcasing exceptional craftsmanship. The grand entrance invites you into a world of elegance and warmth, where no detail has been overlooked. The home offers four spacious bedrooms and four and a half bathrooms, this residence combines comfort and functionality. Step into the awe-inspiring great room, where towering ceilings soar above, creating an airy and inviting atmosphere. The impressive floor-to-ceiling window package floods the space with natural light, seamlessly connecting the indoors with the stunning outdoor beauty. Whether hosting gatherings or enjoying quiet evenings, this room is perfect for both entertaining and relaxation. Adjacent to the great room, a beautifully appointed custom kitchen. Featuring top-of-the-line appliances including an 8 burner gas range, it's a chef's dream. Expansive countertops including a huge island with sit up bar and ample cabinetry provide both functionality and elegance, making it a perfect place to create culinary masterpieces and entertain. For wellness enthusiasts, the private indoor saltwater pool invites you to unwind and enjoy a refreshing swim year-round. The tranquil setting is perfect for relaxation or hours of fun with family and friends. Upstairs you'll find 3 beds including a large bonus/den space. The

large primary bedroom overlooks the wetlands and includes a luxurious 6 piece ensuite bathroom and chic gas fireplace. The lower level continues the same level of finishing as the rest of the home. Large rec/games room including pool table. Additional family room space and a full sized gym offers a dedicated space for maintaining an active lifestyle. Entertainment takes center stage in the dedicated theatre room, designed for memorable movie nights with family and friends. Cozy up on custom seating and immerse yourself in cinematic experiences from the comfort of your own home. The outdoor space is equally impressive, large private deck featuring a luxurious hot tub surrounded by beautifully landscaped grounds. This serene setting is perfect for evening relaxation under the stars or hosting outdoor gatherings. As you explore this amazing location, you'll appreciate the privacy and tranquility it provides. Easy access to trails, parks, tennis courts, the Bow River, shops, restaurants, schools, Inglewood Golf & Country and much more!