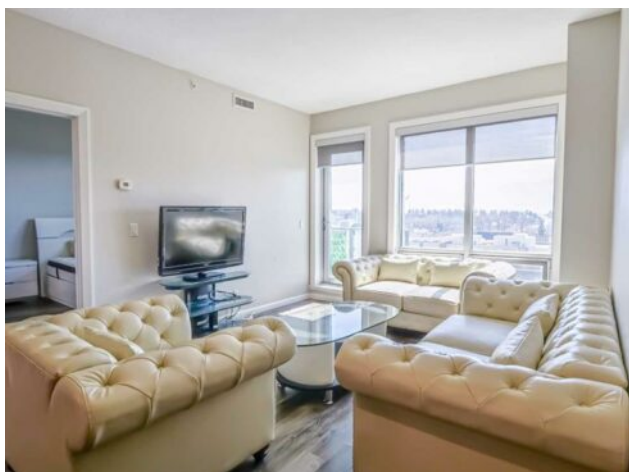


608, 210 15 Avenue SE
Calgary, Alberta

MLS # A2123458



\$397,900

Division:	Beltline		
Type:	Residential/High Rise (5+ stories)		
Style:	Apartment		
Size:	956 sq.ft.	Age:	2008 (16 yrs old)
Beds:	2	Baths:	2
Garage:	Heated Garage, Parkade, Titled, Underground		
Lot Size:	-		
Lot Feat:	-		

Heating:	Central	Water:	-
Floors:	Ceramic Tile, Vinyl	Sewer:	-
Roof:	-	Condo Fee:	\$ 552
Basement:	-	LLD:	-
Exterior:	Brick, Concrete	Zoning:	DC (pre 1P2007)
Foundation:	-	Utilities:	-
Features:	Breakfast Bar, High Ceilings, Open Floorplan, Walk-In Closet(s)		

Inclusions: N/A

The Vetro building is what you call upscale downtown living. This gorgeous 2 bedroom, 2 bathroom apartment is located in downtown's beltline area. Upon stepping into the sixth floor unit, you'll be met by its modern design and natural light coming in through the south facing windows, creating a cozy ambiance throughout the day. This apartment features a stylish open concept kitchen, equipped with stainless steel appliances and plenty of storage space. You'll enjoy the convenience of in-suite laundry and storage facilities both of which are practical for your everyday needs. Plus, benefit from the added luxury of a titled underground parking stall. Residents at Vetro enjoy a variety of exclusive amenities, such as a gym, a relaxing hot tub and a games room with a pool table for endless entertainment. 24 hour security gives you the peace of mind you need. Outside the apartment building, discover a lively neighborhood filled with excitement and convenience. Lots of unique stores and restaurants a few steps away along 17 Ave, or take a walk along the Elbow River. You also get amazing access to the Stampede train station right outside Stampede grounds. Book a showing today to see what makes the Vetro a great place to call your home.