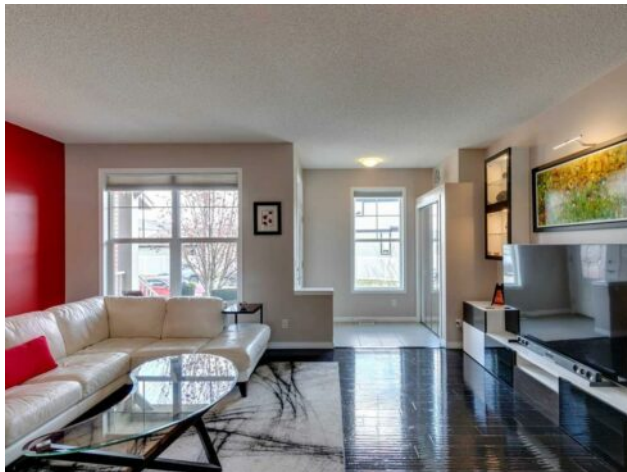


## 15 New Brighton Common SE Calgary, Alberta

MLS # A2214528



# \$639,900

<b>Division:</b>	New Brighton		
<b>Type:</b>	Residential/House		
<b>Style:</b>	2 Storey		
<b>Size:</b>	1,502 sq.ft.	<b>Age:</b>	2011 (14 yrs old)
<b>Beds:</b>	3	<b>Baths:</b>	2 full / 1 half
<b>Garage:</b>	Double Garage Detached		
<b>Lot Size:</b>	0.06 Acre		
<b>Lot Feat:</b>	Back Lane, Back Yard		

<b>Heating:</b>	Forced Air	<b>Water:</b>	-
<b>Floors:</b>	Carpet, Hardwood, Tile	<b>Sewer:</b>	-
<b>Roof:</b>	Asphalt	<b>Condo Fee:</b>	-
<b>Basement:</b>	Full, Unfinished	<b>LLD:</b>	-
<b>Exterior:</b>	Vinyl Siding	<b>Zoning:</b>	R-G
<b>Foundation:</b>	Poured Concrete	<b>Utilities:</b>	-
<b>Features:</b>	Breakfast Bar, Granite Counters, High Ceilings, Kitchen Island, No Smoking Home, Skylight(s)		

**Inclusions:** Hot tub

Beautifully maintained home in New Brighton! This popular Belvedere open concept model has loads of lovely features! Hickory hardwood floors on the main floor, granite countertops in the kitchen, newer lighting including under counter lighting in the kitchen. Maple cabinets in rosewood stain, convection oven, new carpet on stairway and hallway. The walkway on the upper floor features a skylight and overlooks the kitchen. Primary bedroom has a four piece ensuite and walk in closet. Two other bedrooms and a 4 piece bath complete the upper level. The garage also has an attic for extra storage! One block from Dr. Martha Cohen school. This is truly a lovely home in a great neighborhood!